



Dreamweaver Site Management Lesson

One of the most difficult things with working with websites is the file management part. Websites will not work if you don't keep your files managed in the proper way. For example if you don't have a Local Root Folder (LRF) that you are keeping all of your work in and you have files at many different locations, when you send your webpages to the host server your site will not function as it did on your computer. Dreamweaver has a "Site Management" feature that will help you to keep your files in the correct place as long as you start each new work by setting up the "Site". This exercise is meant to teach you how to set up your "Site". You will need to do this for each lesson and project you work on for the rest of the semester. It will be easy to know which students are not doing this because when they send their work to the "Drop Box" their website will not function correctly. Though this lesson may seem simple and unneeded, it is actually one of the most important for a successful website.

Local Root Folder (LRF): Make a LRF and name it "YourName.Sitemanage".

Images Folder: In the LRF make a new folder and call it "Images".

Pages Folder: In the LRF make a new folder and call it "Pages".

Dreamweaver: Start Dreamweaver. In the opening window click on "HTML" and a new document will open.

Site: At the "Command Line" at the top of the screen click on "Site" then "New Site". In the next window click on "New" then "Site". A window that looks like Fig. #1 will open up. Click on the text box next to where it says "Site Name". Type in as the name for the site. For this lesson it should be "YourName Site Management". See Fig. #1 for an example of what this looks like.

Local Site Folder Click on the little folder to the right of the text box where it says "Local Site Folder". Locate your LRF folder that you made for this assignment and click on it then click on "Choose".

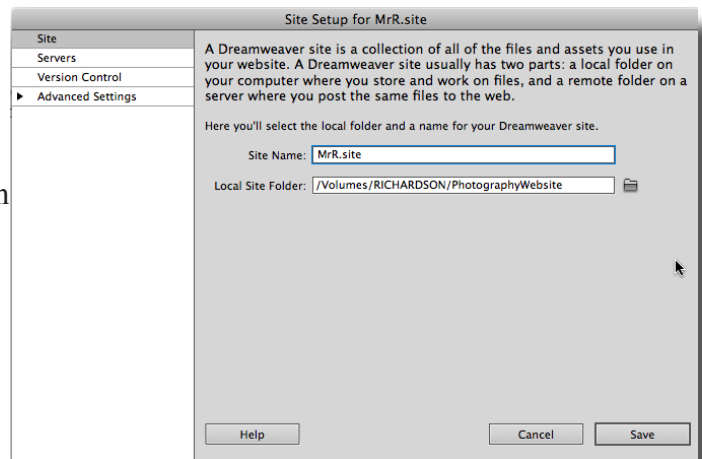


Fig. #1

Advanced Settings: Click on the black arrow on the left side of the place where it says "Advance Settings". Locate where it says "Local Info" and click on it. See Fig. #2 for example.

Images Folder: Locate the little folder image where it says "Default Images Folder". Click on the folder and locate the "Images" folder that you created in your LRF. Choose that folder as your "Default Images Folder".

Document Title: At the top of the document there is a place that says "Title". In the text box next to it type a title for the document. This will be the title of the window for that document. When you create more pages (documents) you should title each of them. Go ahead and title the first page as "Site".

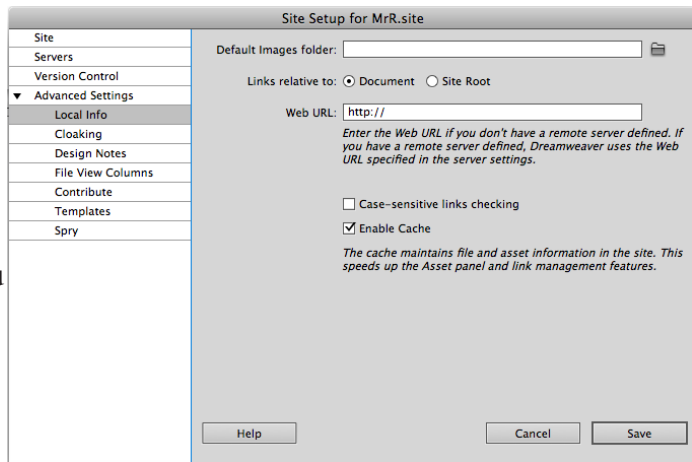


Fig. #2

Saving the File: You will need to save your file from Dreamweaver to show that the "Site Management" is working. The first page for a website should be called "index". So when you save it name it "index". You will name the first page for every lesson and project as "index". Dreamweaver will add the .html to the name so you should see in the LRF a file named "index.html".

2nd Page: Create a new page by going to File>New. Title it "Page 2" and save it in the "Pages" folder as the name "Page 2". You will need to do this type of "Site Management" each time you make a new web page or for our needs, each time you have a new lesson or project.

Turn in work: Place the evaluation sheet into your "Assignment" notebook and place the notebook in the "Turn in" tray. The following items will be need to complete this lesson:

1. LRF named correctly.
2. Images folder in LRF.
3. Pages folder in LRF.
4. "Page 2" in Pages folder.
5. "Images" folder set as "Default Images Folder".
6. index.html in LRF
7. All pages are titled.
8. Site named correctly in Site management.
9. LRF is set as the "Local Site" folder.